

K800™ Fuel Control System

Be in control of your unattended fueling operation with Petro Vend's K800™ Fuel Control System. The K800™ provides you with the tools you need to manage your fuel expenses. Fuel access is restricted to authorized users, and set to the fuel type and quantity you specify. Every transaction is tracked, giving you the security and accountability your unattended fueling operation needs.

K800™ System Components

Fuel Site Controller (FSC) the hub of the system - stores transactions and connects peripherals

Up to four (4) K800™ Fuel Island Terminals (FIT) used by drivers at the island to activate the fuel dispensers



K800™ FIT Features

- ◆ Backlit LCD for visibility in bright sunlight or at night
- ◆ Programmable prompts to guide drivers through the fueling process
- ◆ Durable alloy keypad, 16-gauge steel enclosure and thermostatically-controlled heater for reliable operation in the harshest environments
- ◆ High-impact plastic door overlay and powder-coated enclosure and matching pedestal maintain their appearance for years to come
- ◆ Built-in diagnostics for simplified troubleshooting
- ◆ Built-in pulser power supply, pump control and pre-punched conduit access for easy installation
- ◆ Can be activated either by card (optical or magnetic-stripe), ChipKey® or code activated
- ◆ Manual bypass switch for each hose
- ◆ Four (4) adjustable fueling timers per hose position

K800™ FSC Features

- ◆ Controls up to four (4) Fuel Island Terminals and 16 hoses simultaneously to meet your needs today and tomorrow
- ◆ Up to 10,000 cards and 1,800 transactions can be stored in memory
- ◆ Menu-driven programming with onscreen help for ease of use
- ◆ Serial communication ports for printer, PC and modem
- ◆ Desktop controller can also be conveniently wall-mounted
- ◆ Easily interfaces to existing personal computers
- ◆ Dual card accountability allows tracking and reporting on drivers using multiple vehicles
- ◆ Cardless/keyless access allows drivers to fuel using a quick keypad entry
- ◆ ChipKey® mileage reasonability option ensures accuracy of odometer entries
- ◆ Lock-out any key or card
- ◆ Provides basic inventory tracking
- ◆ Wireless Petro-Net™ communication reduces installation costs
- ◆ Provides four (4) levels of authorized time access

Listings and Certifications



Additional Features

- ◆ Restricts product and quantity for any key, card or account
- ◆ Restricts number of transactions per day for any key or card
- ◆ Adjustable pump time-outs
- ◆ Pump handle monitor and pulser sentry
- ◆ Diagnostic test programs for system start-up and troubleshooting
- ◆ Four (4) memory levels available [up to two (2) megabytes total]
- ◆ Standard report package groups cards together by account and provides itemized reports including MPG, CPM and price extensions
- ◆ Personal Identification Number (PIN) entry with auto-lockout
- ◆ Inventory, pump and product total reports

K800™ Fuel Island Terminal Specifications

Readers: Magnetic-stripe card, optical card, ChipKey®

Display: Backlit LCD (two lines x 16 characters)

Keypad: Durable alloy keypad

Cabinet Dimensions [H x W x D]: 12.0 x 13.0 x 10.0 inches (30.5 x 33.0 x 25.5 cm)

Pedestal Dimensions [H x W x D]: 48.0 x 14.0 x 8.0 inches (122 x 36.0 x 20.0 cm)

Operating Temperature Range: - 40°F to 122°F (- 40°C to 50°C)

Power Requirements: 120/230 VAC, 50/60 Hz; 100 watts max.

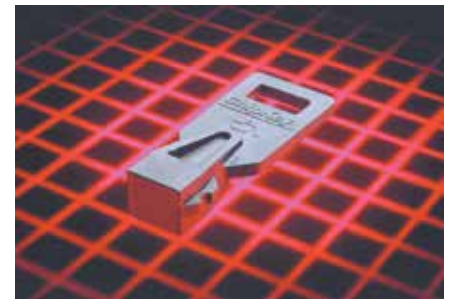
K800™ Fuel Site Controller Specifications

Cabinet Dimensions [H x W x D]: 2.0 x 9.0 x 11.0 inches (5.0 x 23.0 x 28.0 cm)

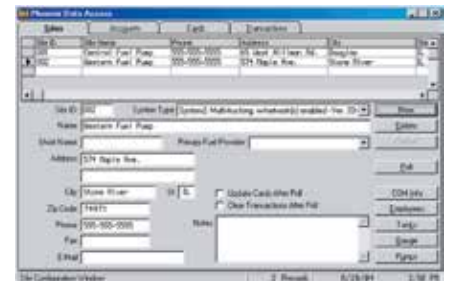
Operating Temperature Range: 32°F to 122°F (0°C to 50°C)

Power Requirements: 120/230 VAC, 50-60 Hz; 50 watts max.

Maximum Petro-Net™ Distance: 5,000 ft (1,524 m)



The rugged, tamper-resistant ChipKey® is a popular alternative to cards. It fits easily onto a customer's key ring, so it's convenient and hard to lose. Every ChipKey® contains a microchip that can be programmed and reprogrammed as many times as you like.



Phoenix™ Plus, and Phoenix™ Premier are powerful fuel management software packages for your Windows®-compatible PC (see page 316 for detailed information).

NOTE: See OPW Fuel Management Systems' website at www.opwglobal.com for detailed product literature, manuals and sales representative contact information for your area.